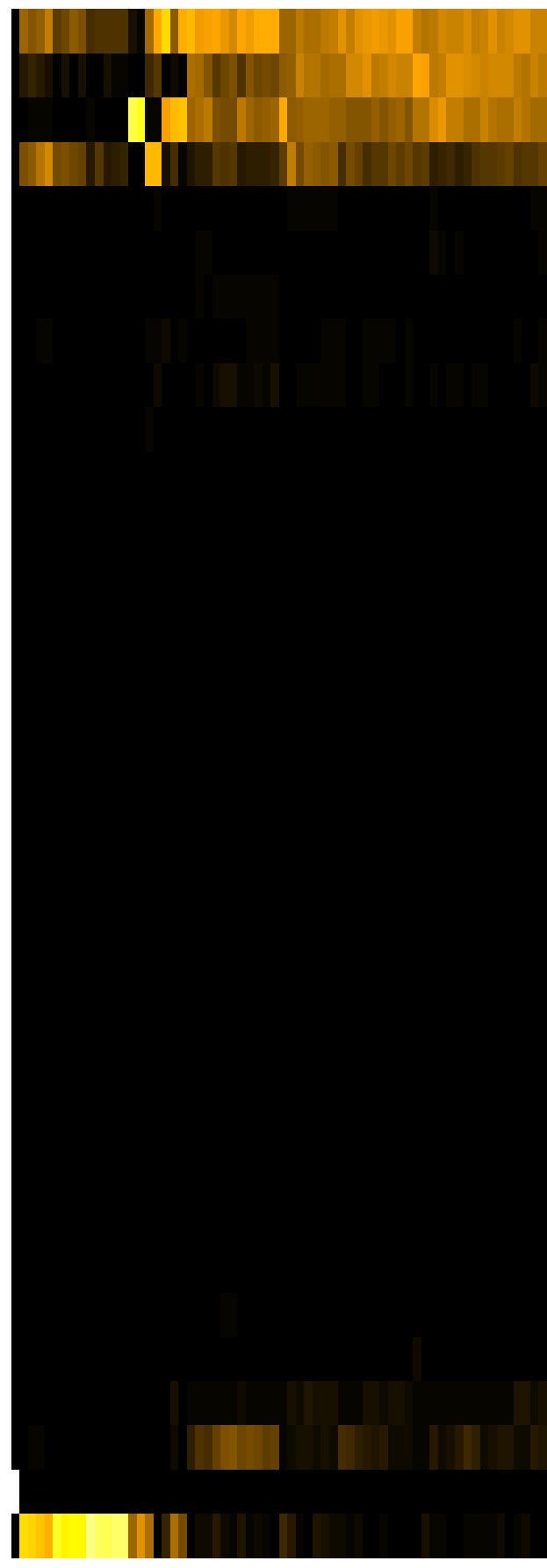
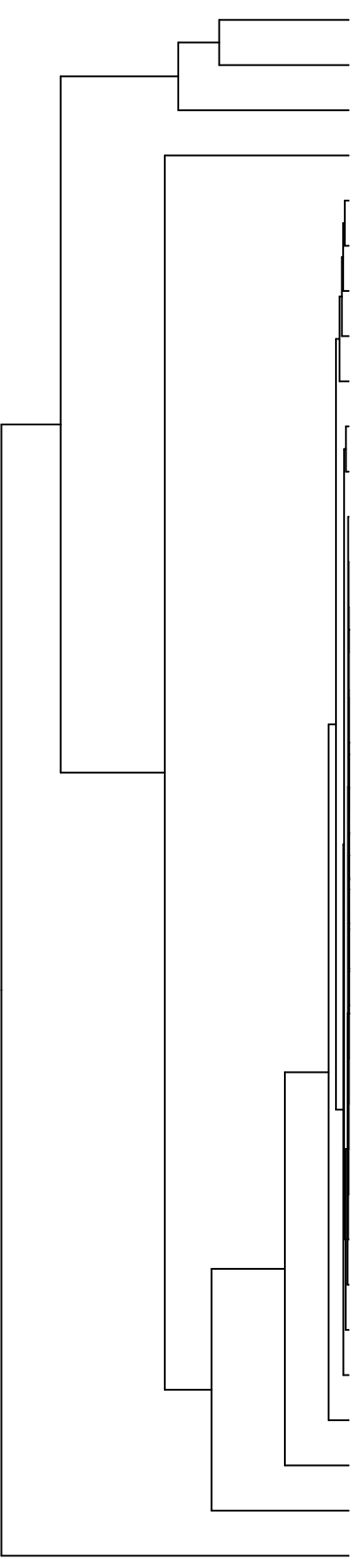


Group006
 D Final -PMA
 A Final -PMA



- Veillonellaceae
- Pasteurellaceae
- Streptococcaceae
- Neisseriaceae
- Porphyromonadaceae
- Prevotellaceae
- Leptotrichiaceae
- Actinomycetaceae
- Campylobacteraceae
- Micrococcaceae
- Gemellaceae
- Saccharibacteria_(TM7)_[F-1]
- Absconditabacteria_(SR1)_[F-1]
- Propionibacteriaceae
- Flavobacteriaceae
- Weeksellaceae
- Phyllobacteriaceae
- Mycobacteriaceae
- Microbacteriaceae
- Sphingomonadaceae
- Rhizobiaceae
- Hymenobacteraceae
- Saccharibacteria_(TM7)_[F-2]
- Comamonadaceae
- Moraxellaceae
- Staphylococcaceae
- Burkholderiaceae
- Atopobiaceae
- Erysipelotrichaceae
- Lachnospiraceae
- Yersiniaceae
- Carnobacteriaceae
- Fusobacteriaceae
- Pseudomonadaceae
- Enterobacteriaceae

- F28914.S583
- F28914.S577
- F28914.S424
- F28914.S582
- F28914.S421
- F28914.S419
- F28914.S580
- F28914.S396
- F28914.S581
- F28914.S393
- F28914.S394
- F28914.S400
- F28914.S553
- F28914.S555
- F28914.S559
- F28914.S560
- F28914.S075
- F28914.S102
- F28914.S101
- F28914.S099
- F28914.S235
- F28914.S258
- F28914.S259
- F28914.S261
- F28914.S073
- F28914.S080
- F28914.S079
- F28914.S239
- F28914.S077
- F28914.S238
- F28914.S264
- F28914.S104

Family

Samples